

DATE of SPILL  dd-Mmm-yy      DATE REPORTED  dd-Mmm-yy      SPILL ID       REPORTABLE

AREA  LOCATION     -W       REPORTED BY

COMPANY       PHONE NUM.

CODE       REPORTER

SUBSTANCE       STATUS       SURFACE 1

SIZE (m<sup>2</sup>)       SURFACE 2

SOURCE       % OFF LEASE       SURFACE 3

WELL LICENSE       UNIQUE ID

WELL TYPE       WELL EQUIP       WELL CAUSE

|                |   |             |                                    |            |                                   |
|----------------|---|-------------|------------------------------------|------------|-----------------------------------|
| SPILLED TOTAL  | <input type="text" value="50.00"/>                              | RECOV TOTAL | <input type="text" value="49.00"/> | LOST TOTAL | <input type="text" value="1.00"/> |
| SPILLED OIL    | <input type="text" value="0.50"/>                               | RECOV OIL   | <input type="text" value="0.50"/>  | LOST OIL   | <input type="text" value="0.00"/> |
| SPILLED WATER  | <input type="text" value="49.50"/>                              | RECOV WATER | <input type="text" value="48.50"/> | LOST WATER | <input type="text" value="1.00"/> |
| SPILLED COND   | <input type="text" value="0.00"/>                               | RECOV COND  | <input type="text" value="0.00"/>  | LOST COND  | <input type="text" value="0.00"/> |
| RELEASED GAS   | <input type="text" value="0.00"/>                               | RECOV GAS   | <input type="text" value="0.00"/>  | LOST GAS   | <input type="text" value="0.00"/> |
| SPILLED CHEM   | <input type="text" value="0.00"/>                               | RECOV CHEM  | <input type="text" value="0.00"/>  | LOST CHEM  | <input type="text" value="0.00"/> |
| REF. CHEM TYPE | <input type="text"/> ( Company to Report to Sask. Environment ) |             |                                    |            |                                   |

LANDOWNER       LO PHONE       CONTACTED

OCCUPANT       OC PHONE

LO COMMENT

COMMENTS:

surface casing vent leak - 90% contained on lease - some did run off lease into a stubble field.



CLEANUP PROCEDURE

SOIL REMOVED

REPORT SUBMITTED

YES

MATERIAL MOVED TO

Tervita Gull Lake

REPAIRS CONDUCTED

Service rig brought in to replace the hole in the production

SUMMARY DETAILS

Impacted soil/snow hauled to landfill. 568.9m3 hauled to Tervita. Spill area cleaned up.

dd-Mmm-yy

START DATE

07-Feb-14

INITIAL INSPECTION

10-Feb-14

FINAL INSPECTION

09-Apr-14



# Ministry of Energy and Resources

## SPILL REPORT

Date of Spill:  Date found:

Date Reported to MER:  MER Contact:

Location      w  Reported to MER by:

Phone Number:

Company:  Reporter:  Company Rep

Landowner

Govt Agent

Other

Substance:  Oil Source:  Line Status:  Active

Salt Water  Facility  Abandoned

Emulsion  Well  Suspended

Condensate  Misc.

Natural Gas

Refine Chem

Size (m2)  % off Lease

Surface  Cultivated  Surf Water Access

Uncultivated  Ground Water Other

Bush

Spilled Total  m<sup>3</sup> Recovered Total  m<sup>3</sup> Lost Total  m<sup>3</sup>

Spill Oil  m<sup>3</sup> Recovered Oil  m<sup>3</sup> Lost Oil  m<sup>3</sup>

Spilled Water  m<sup>3</sup> Recovered Water  m<sup>3</sup> Lost Water  m<sup>3</sup>

Spilled Condensate  m<sup>3</sup> Recovered Condensate  m<sup>3</sup> Lost Condensate  m<sup>3</sup>

Released Gas  m<sup>3</sup> Recovered Gas  m<sup>3</sup> Lost Gas  m<sup>3</sup>

Spilled Chemical  m<sup>3</sup> Recovered Chemical  m<sup>3</sup> Lost Chemical  m<sup>3</sup>

Refined Chemical T

*(Company to Report to Sask. Environment as well)*

Landowner:  Phone:  Contacted:

Occupant:  Phone:  Contacted:

Landowner Comment:

Additional Comments:

Volume released was estimated at 50 m3 total.



# Ministry of Energy and Resources

## **FACILITY**

Facility License

Facility Type

- Battery
- Compressor
- Water Plant
- Satellite
- Reclaimer
- OBSST

Facility Equipment

- Treater
- Separator
- Storage Tank
- Pump
- Valve
- Fitting

Facility Cause

- Human Error
- Vandalism
- Equipment Failure
- Fire
- Corrosion
- Blowout
- Lightning
- Cattle
- Misc.

## **WELL**

Well License

Unique ID

Well Equipment

- Stuffing Box
- Storage Tank
- Pump
- Valve
- Fitting

Well Type

- Oil
- Gas
- Water Source
- Water Injector/Disposal
- Steam Injector
- Other Injector

Well Cause

- Human Error
- Vandalism
- Equipment Failure
- Corrosion
- Blowout
- Fire
- Lightning
- Cattle
- Misc.

## **MISC.**

Misc.Type

- Truck
- Other

Misc. Cause

- Human Error
- Mechanical Failure
- Road Conditions
- Lightning
- Other

Explain Other:



# Ministry of Energy and Resources

## ***CONTAINMENT REMEDIATION AND RECLAMATION***

Start Date

Cleanup Procedure:  Soil removed  Burning  
 Hot water wash  Plowed In  
 Chemical Treated  Nothing Required

Details of Cleanup Procedure:

Material Moved to

Repairs Conducted

Summary Details

## ***DIAGRAM OF SPILL AREA***

North

Please see attached



Spill Origin  
5558981 N.  
672635 E.

- Wellhead - Oil
- ✕ Spill Origin
- - - Underground Flowline

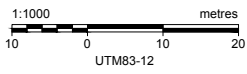
| Spill Area Summary      |                           |
|-------------------------|---------------------------|
| Spill Area On-Lease     | 3070 m <sup>2</sup>       |
| Spill Area Off-Lease    | 410 m <sup>2</sup>        |
| <b>Total Spill Area</b> | <b>3480 m<sup>2</sup></b> |



Husky Oil Operations Limited  
10-07-014-19 W3M

DRAFT

Site Plan



Reference: June 4 to September 24, 2011 aerial photograph obtained from Valtus Imagery Services.

|                     |                      |                       |                        |                   |
|---------------------|----------------------|-----------------------|------------------------|-------------------|
| Date: February 2014 | Project: 18988-SP-14 | Technical: L. Thomson | Reviewer: D. Philippon | Drawn: N. McElmon |
|---------------------|----------------------|-----------------------|------------------------|-------------------|

Disclaimer: The information contained herein may be compiled from numerous third party materials that are subject to periodic change without prior notification. While every effort has been made by Matrix Solutions Inc. to ensure the accuracy of the information presented at the time of publication, Matrix Solutions Inc. assumes no liability for any errors, omissions, or inaccuracies in the third party material.

1. Spill path viewing southeast



*Photo taken by Dan Logan— February 7, 2014*

2. Spill extent viewing east



*Photo taken by Dan Logan— February 7, 2014*

3. Spill path viewing southeast



Photo taken by Lyle Thomson – February 13, 2014

4. Spill origin (11/01-07 wellhead) viewing south



Photo taken by Lyle Thomson – February 14, 2014



5. Spill area viewing west



Photo taken by Lyle Thomson – April 5, 2014

6. Spill origin viewing west



Photo taken by Lyle Thomson – April 5, 2014